



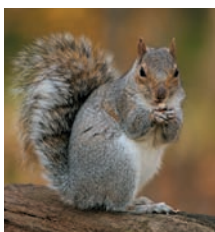
#### Mice and rats

Can spread disease as well as damaging electrical wiring, wood and water pipes. Deter mice and rats by keeping bird food out of reach and covering bins. Catch-and-release humane traps and sonic repellents can be used indoors too. Poison may be needed for a major infestation - use with caution and do not use near children or pets.



#### Cats

If the toilet habits of cats are a problem, try placing mothballs, holly or lemon or orange peel in their favourite spot, or spray it with a non-toxic cat repellent. Sonic deterrents are very effective, however avoid these if you keep rabbits or guinea-pigs as the sound frequency affects them too.



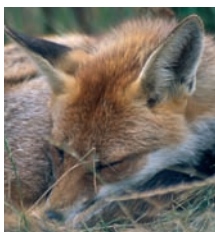
#### Grey squirrels

Notorious for causing damage to young trees - so protect the trunk with a tree guard when planting. To prevent squirrels digging up newly planted bulbs, fix chicken wire over them. For other areas try sonic deterrents.



#### Moles

If they really are a nuisance moles can be trapped or alternatively try a solar powered sonic deterrent, see 'Ideal for the job' on page 5.



#### Foxes

A common problem in urban areas, use sonic fox deterrents, which will not affect pets such as cats and dogs and should help keep foxes away from bins.

## Ideal for the job

#### Drive away moles

The Solar Powered Mole Repeller is a clever deterrent powered by a solar panel, which even in dim light, regularly emits a tone into the ground that will drive away moles and voles without harming them or the environment.



#### Dealing with slugs

Use slug pellets with caution as they can be poisonous to other wildlife if eaten in large quantities. Choose pellets formulated to cause least harm to other creatures. Scatter them thinly and always follow the instructions on the container.



# how to... control pests in the garden

#### tools

- gloves
- watering can

#### materials

- copper-impregnated tape or slug pellets
- sharp sand, horticultural grit or eggshells
- pesticides
- nematodes
- sticky yellow traps or pheromone traps

#### B&Q you can do it

Learn more about home improvement and other gardening jobs with the bestselling **you can do it** – the complete B&Q step-by-step book of home improvement. Only **£16.98**



Please remember to recycle this leaflet when you have finished, you could even compost it as the leaflet has been printed using vegetable-based inks.

A summary of this leaflet can be made available in Braille, large print and audio cassette. Please ask for details or email us at [diversity@b-and-q.co.uk](mailto:diversity@b-and-q.co.uk)

Every effort has been made to ensure that the instructions given in this leaflet are accurate and will enable you to do the job safely and successfully. Please follow instructions carefully and seek expert advice in the event of difficulty.

©2008 B&Q plc. Hampshire, SO53 3YX

All information correct at time of going to print.

HOWT0086

Part of caring for your garden is dealing with pests. Some can be destructive or even fatal to plants while others, such as ants and cats, can be a nuisance or spoil your enjoyment of the garden. As a rule, taking action against pests quickly will help keep the problem under control.

## Pests - natural defences

The first line of defence against pests is to grow strong, healthy plants that can withstand a bit of chomping. Secondly, each pest has a natural predator which is capable of controlling the problem for you – so welcome into your garden insects and other forms of wildlife that are the gardener's friends.

### Predators

Ladybirds, lacewings and hoverflies, for example, will devour copious quantities of aphids. Lure them with nectar-producing plants and flowering herbs such as santolina, lavender, sage or rosemary.

Birds can play an active role in reducing the population of caterpillars that eat your vegetables and other plants. The heaviest infestations often occur when there are nests full of hungry mouths to feed. A well-stocked bird table is one way to increase the number of birds that visit your garden.

## Safety first

### Using garden chemicals safely

- Always follow instructions exactly, and dilute and apply as directed
- After using garden chemicals children and pets should be kept away from the treated area
- After use make sure garden chemical containers are tightly sealed and don't leave garden chemicals within reach of children or pets
- Never store garden chemicals in unmarked containers
- If garden chemicals get onto your skin, wash immediately
- It is illegal to put any garden chemical down a main drain or waste water drainage system, even when diluted
- Dispose of garden chemicals safely at your local authority civic amenity centre. Contact your local council for details.

## Fighting pests

Every garden will eventually develop its own balance. In the meantime, here are suggestions for fighting the worst offenders

### Without chemicals

#### Manual collection

Pick off and dispose of slugs, snails, caterpillars and adult vine weevils.



#### Barrier methods

Lay horticultural fleece over crops susceptible to cabbage white caterpillars. Sprinkle sharp sand, horticultural grit or eggshells around plants susceptible to slug damage and wrap copper-impregnated tape around pots. Place a fine vertical mesh about 45cm high around carrots to stop carrot fly.

#### Companion planting

Many insects, particularly aphids, detest strong-scented plants, such as marigolds or chives, which can be planted next to susceptible plants such as tomatoes.

#### Slug pellets

Choose pellets formulated on non-toxic ingredients to cause least harm to other creatures and always follow the instructions on the packet.

#### Pesticides

Those based on soft soap, insecticidal soap or quassia are non-residual. They can be used against aphids, caterpillars, red spider mites, sawflies and woodlice. Use carefully as they are non-selective and will kill all insects, good and bad.

#### Nematodes

These are microscopic natural predators. Some destroy insects, and all are species specific. They are usually sold in powder form, for mixing with water and watering onto plants and soil.



#### Traps

In greenhouses, hang sticky traps that attract aphids, wasps and whitefly. Hang pheromone traps from fruit trees. They attract the adult males, which become caught on the sticky inside. To decrease the wasp population, hang wasp traps close to fruit trees before the fruit becomes fully ripe.

### Using chemicals

#### Contact pesticides

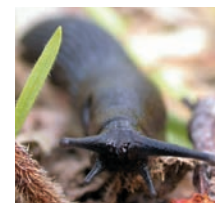
Will only kill live bugs and are not absorbed by the plant, regular spraying needed.

#### Systemic pesticides

Absorbed by the plant, particularly good at controlling sap-feeding insects, but not selective, will kill all insects good and bad.

## Identifying pests

Here are some of the most common pests.



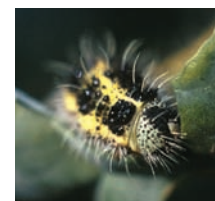
### Slugs and snails

Snails and slugs love cool wet weather and like eating tender plants such as hostas. Sweep up garden rubbish, so they can't hide under it. Use copper-impregnated tape round pots.



### Aphids and whitefly

Greenfly, whitefly and blackfly are all sapsucking insects that can severely disfigure flowers and growing tips. The honey-dew they deposit on leaves attracts a sooty mould and ants.



### Caterpillars

Cabbage white and mullein moth caterpillars tend to be the biggest problem. The former attack nasturtiums as well as brassicas; the latter devastate verbascums.



### Ants

Do little damage to plants and unless their nests are very troublesome ants are best left alone. They can be ousted by hosing their nest or using an ant control powder or liquid.



### Wasps

Wasps feast on soft skinned damaged fruit so harvesting plums or picking up fallen pears may mean risking a sting or two. Wasp traps placed near fruit trees can help reduce their numbers.