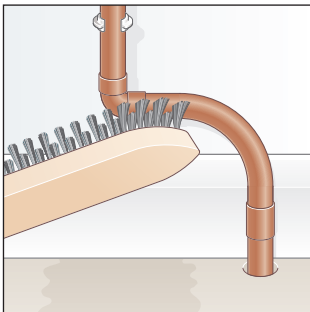
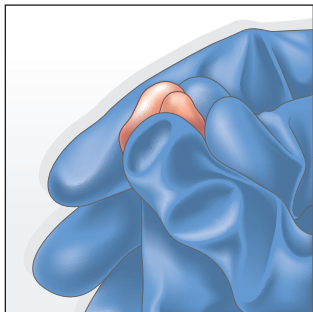


## Repairing a leaking joint

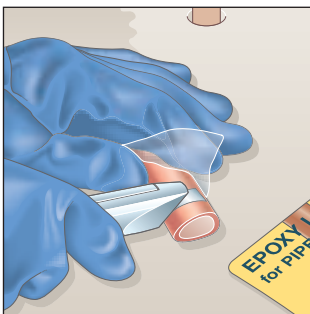
Remaking a soldered pipe joint that is leaking requires some skill; much easier is to use a two-part epoxy repair compound, which will also stop the leak permanently. When hard, the material can be sanded for painting.



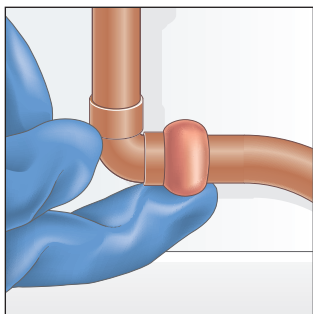
**1** Shut off the water supply to the affected section of pipe and drain it down (see the **you can do it** book). Dry the pipe, then key the area that needs to be repaired with a wire brush.



**3** Work the material between your fingers until it reaches a uniform colour. At this stage, you will have to work quickly, as you have only about five minutes before it begins to harden.



**2** Wearing rubber gloves to protect your skin, twist or cut off enough two-part epoxy compound to carry out the repair.



**4** Press the material around the joint, forcing it into the gap between pipe and fitting. Smooth it as much as possible, then leave for 24 hours to harden fully.

## Ideal for the job

### Stopping leaks

For instant but temporary repairs to pipes, place a **pipe repair clamp** over the leak and tighten the screws to seal it.



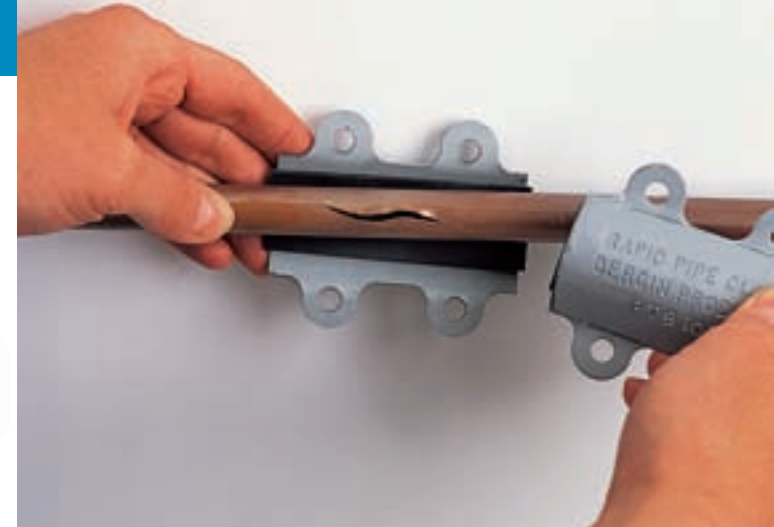
### Cutting pipe

This circular-shaped **mini pipe cutter** is ideal for working in confined spaces and also has a deburring tool attached.



### Joining pipes

**Push-fit connectors** or joints are an easy and effective way of joining two pipes. They are available as straight couplings, Tee-shapes and elbow shapes.



# how to... deal with plumbing emergencies

### B&Q you can do it

Learn about draining radiators and other plumbing information with the bestselling **you can do it – the complete B&Q step-by-step book of home improvement**. Only **£16.98**



Please remember to recycle this leaflet when you have finished, you could even compost it as the leaflet has been printed using vegetable-based inks.

A summary of this leaflet can be made available in Braille, large print and audio cassette. Please ask for details or email us at [diversity@b-and-q.co.uk](mailto:diversity@b-and-q.co.uk)

Every effort has been made to ensure that the instructions given in this leaflet are accurate and will enable you to do the job safely and successfully. Please follow instructions carefully and seek expert advice in the event of difficulty.

©2008 B&Q plc. Hampshire, SO53 3YX

All information correct at time of going to print.

HOWT0066

### tools

- screwdriver
- mini pipe cutter with deburring tool
- deburring brush or wire wool
- measuring tape
- felt-tip pen
- wire brush
- rubber gloves
- garden hose
- hair dryer, hot water bottle or hand towels

### materials

- pipe repair clamp with fixing screws
- new length of copper pipe
- 2 straight push-fit connectors
- short length of 4mm<sup>2</sup> single-core earth cable and 2 bonding clamps
- two-part epoxy repair compound

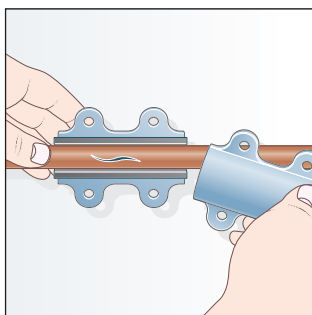
Water can cause serious damage to the fabric of your home, so prompt action is essential if a plumbing problem occurs.

### Turn off the power and water

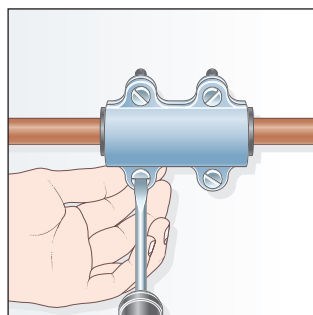
If you do suffer a burst pipe, a leaking cistern or flooding of any kind, the first thing to do is turn off the electricity supply at the consumer unit (fuse box) and the water at the main stop valve immediately. When the leak has been repaired and the water mopped up, examine all sockets, switches, ceiling roses and electrical equipment in the vicinity to make sure they are dry. If water has got into them, don't turn the power back on until they have dried out. In such a situation a knowledge of your plumbing system is vital: make sure you know the location of all the valves, particularly the main stop valve, which allows you to turn off the supply in an emergency. Check valves every few months to ensure that they can be opened and closed easily. A little penetrating oil to a valve shaft will help free it.

### Fixing a burst pipe

A pipe repair clamp is the quickest means of stopping water leaking from a burst pipe, and it doesn't require the pipe to be drained before it can be fitted. However, it should only be regarded as a temporary repair.



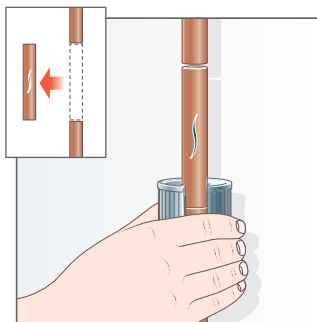
**1** Assemble the two halves of the clamp over the damaged portion of pipe; double-check that the rubber sealing gasket is positioned correctly.



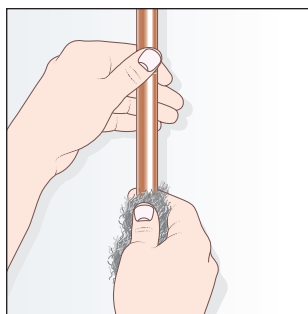
**2** Fit the securing screws and tighten them fully to clamp the device firmly over the damaged section of pipe.

### Making a permanent repair

Plastic push-fit joints are probably the easiest method of joining pipes to replace a damaged section.



**1** Turn off the water supply and drain the pipe. Use a mini pipe cutter to make cuts on each side of the damaged area and remove that section of pipe, freeing the pipe from nearby clips if necessary.



**2** Use a deburring tool to remove burrs from inside the cut ends. Burnish the outside with a deburring brush or wire wool. Measure for the new piece of pipe, allowing for the distance between the internal pipe stops of the push-fit joints. Cut the pipe and file the ends.

### Airlocks

Connect a garden hose to the kitchen cold tap, which is on mains pressure (or any cold tap if you have a direct system) and connect the other end to the affected tap. Open both taps and leave for a few minutes. The mains pressure should force the air out of the system. You may have to repeat the process.

### A frozen pipe

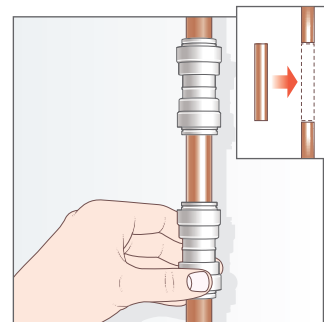
To thaw a frozen pipe, warm it with a hair dryer, working along its length from the frozen tap or valve until the water starts to flow again. Alternatively, drape a hot water bottle over the pipe or soak hand towels in hot water, wring them out and wrap them around it. Don't use a blowtorch.

### Water pouring from a ceiling

Water storage cisterns and tanks are usually situated in the loft or on the upper floor of a house. If a leak occurs, turn off the electricity at the consumer unit and the water supply at the main stop valve. Position containers to catch the leaking water and turn on all the taps and flush WCs to empty the pipes and cold water storage cistern. If the leak is coming from a hot water cylinder, turn off the boiler and empty the cylinder by running a hose from the draincock near its base to an outside gully. Repair or replace items as necessary.

### No water from a tap

- Turn on the kitchen cold tap – or any cold tap on a direct system. If there is no flow, make sure the main stop valve is open; if the problem persists, call your water supplier.
- If the mains cold tap is working, inspect the cold water storage cistern; if it is empty, make sure the ball valve isn't jammed. Dismantle and clean the valve or replace it. If there is no flow when the valve is held open, your rising main (where main water pipe enters your house, usually under the sink) is blocked – this can be caused by ice.
- If the cold water storage cistern is full but there's no flow from bathroom taps, there is an airlock or blockage in the supply pipe from the cold cistern or hot water cylinder.



**3** Insert each end of the new piece of pipe into a push-fit coupling. Fit this assembly onto one of the existing pipe ends, making sure it is pushed fully home. Unclip as much of the two lengths of original pipe as possible and push the remaining cut pipe end into its coupling. Restore the earth bonding across the plastic joints (see SAFETY FIRST).

### SAFETY FIRST

Plastic push-fit joints on copper pipes destroy the continuity of a plumbing system's earth bonding (see the **you can do it** book). This must be restored by joining the two copper pipes with a length of 4mm<sup>2</sup> single-core earth cable, secured by earth clamps.